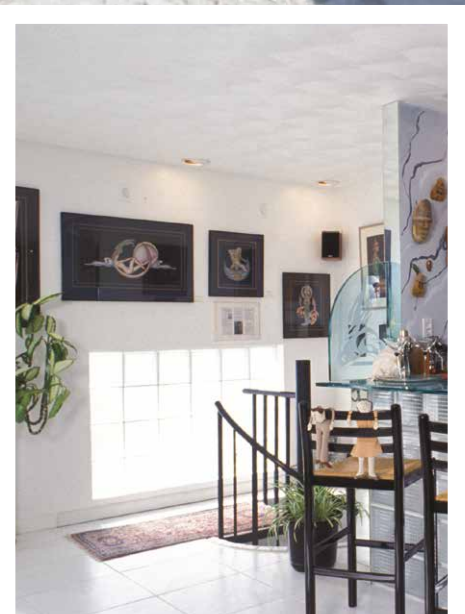




gap
01/25 174



GAP

Thixotropic, fiber-reinforced technical leveling mortar for preparing indoor and outdoor substrates. Layers 3 to 20 mm thick.

substrate preparation



A SIKA BRAND



Blender/
Cement mixer



20±1%



5-35°C



Smooth

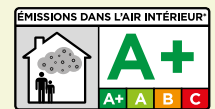


60 min



20 mm

gap



MAIN FEATURES

Monocomponent
Thixotropic
Optimum bonding capacity
Fiber-reinforced

APPEARANCE

Grey powder

STORAGE

12 months in dry place

FIELDS OF USE

- Application of leveling coats in layers 3 to 20 mm thick. To be covered by tiles or natural stone materials after 24-48 h (depending on thickness and temperature)

SUBSTRATES

Cement-based screeds, concrete.

NATURE OF THE PRODUCT

GAP mainly consists of high-strength cements, selected mineral charges, organic co-polymers and specific additives. For further details, ask the technical office for the safety brief or download it from the web site www.technokolla.com.

OPERATIONS PRIOR TO APPLICATION

The substrate must be structurally sound and free from dust, dirt, loose material, surface contamination as oil or grease, cement laitance.

Cement substrates should not be subject to shrinkage after the installation of the product, therefore they must be properly cured.

Concrete: the substrate should be prepared by suitable mechanical preparation techniques, such as high water pressure or grit blasting, mechanical or manual breakers. Non impact/vibrating cleaning methods are preferred. Aggregates should be clearly visible on the surface of the prepared area. The edges of the repair area must be cut vertically (90° degree angle) to a minimum depth of 3 mm.

Pre-wet the surface of concrete up to saturation. The wetted surface should achieve a dark matt appearance, without glistening: no liquid water must be present on the surface.

substrate preparation



RECOMMENDED ACCESSORIES



Blender



28x12 cm
smooth trowel

HOW TO PREPARE THE MIXTURE

Blend GAP with approximately 5 l. of clean water per 25 kg bag ($20\pm 1\%$) until mixture is homogeneous and lump-free. If substrates are very smooth, such as cast or surfaced concrete, or simply to increase the bonding capacity of GAP to the substrate, the mixture can be prepared using TC-LAX and water in 1:1 ratio. In all cases, prepare mortar in a cement mixer or screw-mixer with blender at low speed (approx. 500 rpm).

APPLICATION

Apply product with a smooth steel trowel. Press mortar well down onto substrate to ensure a perfect bond. Wet surface with plenty of water if it is very absorbent or in sunny weather to prevent product from drying out and failing to adhere properly. Maximum thickness of leveling layer is 20 mm.

CONSUMPTION

1.6 - 1.7 kg/m² per mm of thickness.

WARNINGS AND RECOMMENDATIONS

Do not apply to:

- anhydrite screeds
- gypsum-based panels or plaster, plasterboard and resilient flooring
- substrates subject to rising damp
- metal, wood, ceramic and smooth, non-absorbent substrates

- do not apply in layers less than 3 mm thick
- do not add anything to the product that is not specified in this data sheet
- do not use product once it has started to set by adding water to make it more workable. Prepare fresh mixture
- do not apply at temperatures lower than 5°C or higher than 30°C



TECHNICAL DATA	VALUE
Appearance of finished product	grey powder
Maximum diameter of aggregate	1.2 mm
Apparent specific mass of powder	~ 1450 kg/m ³
Water required for mixing	20±1%
Apparent specific mass of fresh mortar	~ 2000 kg/m ³
Pot life	*~ 60 min
Storage	12 months in unopened pack in dry place

FINAL PERFORMANCE	VALUE	REQUIREMENT	STANDARD
Compressive strength after 28 days	~ 15 N/mm ²	≥ 12 N/mm ²	EN13892-2
Flexural strength after 28 days	~ 3.5 N/mm ²	≥ 3 N/mm ²	EN13892-2

APPLICATION SPECIFICATIONS	VALUE
Application	by hand
Minimum thickness	3 mm
Maximum thickness	20 mm
Can be tiled after	*24-48 h
Consumption	~ 17 kg/m ² per cm of thickness
Temperature during application	min.+5°C, max.+35°C

* These time intervals refer to a temperature of 23°C–50% R.H.

FRENCH VOC LABEL	
Emission class	r.p. No. Eurofins
Classe A+	392-2022-00170303_E_EN

SPECIFICATION

Substrates must be leveled with cement-based mortar blended with water alone, such as TECHNOKOLLA's GAP, which can be applied both on walls and floors in layers up to 20 mm thick.

Technokolla reminds you to examine the “**notes**” document that completes the information in this data sheet. The document can be downloaded in the pdf format from the website www.technokolla.com.

The advice about technical matters in the technical data sheets, or given verbally or in writing by our personnel as part of our customer assistance service, is the result of our best and most up to date experience. Since we are unable to personally modify the conditions in the building site or the way the work is carried out, this information is purely indicative and, thus, binds us neither legally nor in any other way in relation third parties. This information does not relieve the end user from being responsible for testing our products so as to make sure they are fit for the required use. We therefore strongly advise the customer/user to subject Technokolla's products to preventive tests in order to ensure that they are suitable. The end user is also responsible for checking to make sure that this technical data sheet is not obsolete and that more recent editions have not replaced it. Thus, before using our products, you are advised to download the most up to date version of the technical data sheet from our web site www.technokolla.com.



A SIKA BRAND

Sika Italia S.p.A.

Registered Office and Administrative Headquarters:

Via L. Einaudi 6, 20068 Peschiera Borromeo (MI)

Sassuolo plant (MO): Via Radici in Piano 558, Postal Code 41049

Ph.: +39 0536 809711

Fax: +39 0536 809729

www.technokolla.com