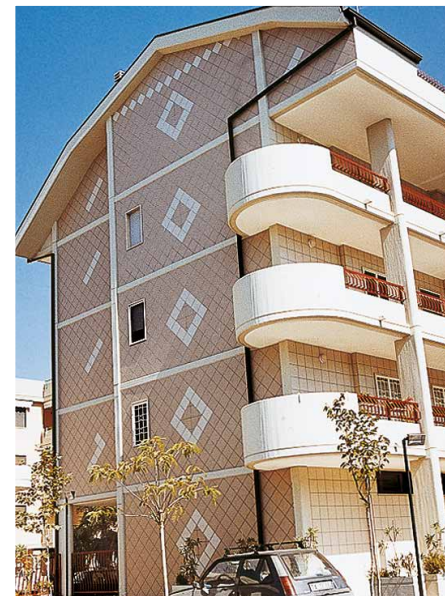


technostar
01/25 178



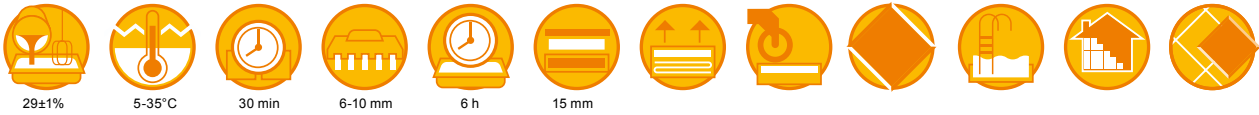
TECHNOSTAR

Highly deformable monocomponent powder adhesive used in layers up to 15 mm thick. Especially suitable for fixing porcelain stoneware and natural stone in large sizes. Fixing on façades, heating screeds, in swimming pools and for industrial floors.

**bonding agents
and adhesives**



A SIKA BRAND



technostar



MAIN FEATURES

- Monocomponent
- Can be used in thick layers
- Frost proof
- No vertical creep
- Highly deformable
- Layers up to 15 mm thick

APPEARANCE

White or grey powder

STORAGE

12 months in dry place

FIELDS OF USE

- Fixing ceramic tiles of all types, even large sizes, on walls and floors, indoors and outdoors.
- Suitable for use when high performance is required, such as: tile laying in industrial environments, swimming pools or facades.
- Over-tiling on top of old ceramic tiles without use of primer.
- Suitable for fixing thin porcelain stoneware slabs.
- Fixing natural stone and marble, so long as they are not affected by water.
- Fixing on electric or water heating screeds.
- Spot-glueing insulating panels made of polystyrene, polyurethane foam, rock or glass wool.

SUBSTRATES

Cement-based plaster, cement-lime mortar, gypsum-based plaster¹, anhydrite screeds¹, cement-based screeds, concrete, aerated concrete, old ceramic floors, resilient floors perfectly adherent (excluding polyolefin coatings)², plasterboard¹, RASOGUM + or products of RASOLASTIK range.

¹ after application of PRIMER-T PLUS

² after application of PRIMER-101 PLUS

NATURE OF THE PRODUCT

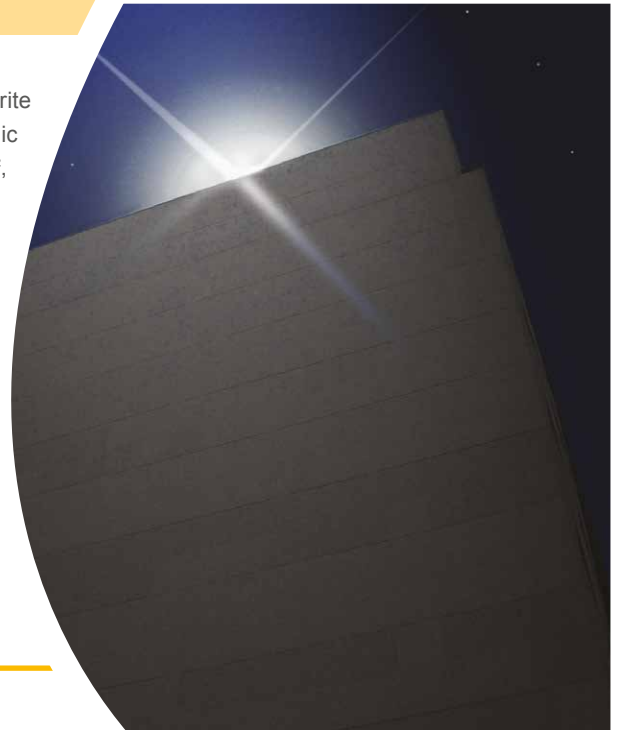
TECHNOSTAR mainly consists of high-strength cements, selected mineral charges and specific additives.

For further details, ask the technical office for the safety brief or download it from the web site www.technokolla.com.



LOW-VOC product

TESTED BY EUROFINS



RECOMMENDED ACCESSORIES



Blender



White rubber mallet



28x12 cm trowel stainless steel
10 mm square serrations



28x12 cm trowel stainless steel
Ø 15 mm rounded serrations

OPERATIONS PRIOR TO APPLICATION

Substrates must fulfill the requirements of the local standards, be properly cured, structurally sound, dimensionally stable, free of any loose or friable particles, clean, dry and free of any contaminants such as dust, dirt, oil, grease, release agent, cement laitance or efflorescence. Cement substrates should not be subject to shrinkage after the installation of the product, therefore they must be properly cured. Comply with local standards.

Depending on the substrate condition and contaminants to be removed from the surface, perform adequate preparation techniques, such as water-jet washing or blastcleaning, in order to remove all traces of any materials that could reduce the product's adhesion to the substrate. Cracks in substrates must be identified and sealed appropriately.

On non-absorbent or substrates with limited absorbency, such as existing ceramic tiles etc., check to confirm that these surfaces are all firmly and securely bonded and stable, then use suitable degreasing/descaling products to thoroughly and completely clean the surface.

For applications in hot climates / environments and / or on absorbent substrates, thoroughly pre-dampen the surface immediately prior to the product application, but avoid any ponding / standing water on the surface, which must not be damp to touch and not with a dark-matt / wet surface appearance i.e. it must be saturated surface dry (SSD).

For tiling in frequently damp or wet rooms, then a suitable TECHNOKOLLA® waterproofing product / system should be applied before the tiling.

Small localized hollows or gravel pockets in concrete can be leveled (thickness not more than 5 mm) with TECHNOSTAR 24 h prior to fixing. If thicker layers are required, use GAP 24-48 h before fixing tiles.

HOW TO PREPARE THE MIXTURE

Blend TECHNOSTAR with approximately 7 l of clean water (29±1%).

Blend until mixture is homogeneous and lump-free. It is advisable to use blender at low speed (approx. 500 rpm) as high speed will reduce the mechanical characteristics of the product. Wait 5-10 minutes, then stir the product briefly again before applying. The creamy paste obtained can be easily applied by trowel and possesses optimum thixotropy.

APPLICATION

Apply using a notched trowel.

Apply sufficient product to ensure complete 'wetting' of the back of the tiles.

Tiling must be carried out on freshly applied adhesive, applying adequate pressure to ensure complete and uniform contact with the adhesive and thus optimum bond. If a film is seen to form on the surface, the adhesive has been left for too long, then immediately remove the adhesive layer with the trowels, discard this material and apply a fresh layer of adhesive.

Do not wet the adhesive once applied, as the water compromises the adhesion.

Avoid application in direct sunlight and/or strong wind / draughts.

WARNINGS AND RECOMMENDATIONS

It is always advisable to apply two coats when laying tile sizes measuring 900 cm² or larger.

Do not apply to:

- metal
- old tiles outdoors

Do not use:

- at temperatures less than 5°C or more than 35°C
- in coats more than 15 mm thick

technostar

CONSUMPTION

Trowel	8x8 mm	10x10 mm	Ø 15 mm
Technostar	~ 4 kg/m ²	~ 5 kg/m ²	~ 7 kg/m ²

Consumption data refer to sole use of a trowel on flat substrates.

TECHNICAL DATA	VALUE	REQUIREMENT	STANDARD
Curing time	10 min		
Pot life	*6 h		
Open time	*30 min	°30 min	EN 1346
Adjustability time	* ~ 50 min		
Treadable	*After 24-36 h		
Floor tiles can be grouted	*After 24-36 h		
Wall tiles can be grouted	*After 4-6 h		
Surface can be used	*After 14 days (21 days for tanks and swimming pools)		
Creep on vertical wall	≤ 0.5 mm	°≤ 0.5 mm	EN 1308
Transverse deformation	2.8 mm	≥ 2.5 mm	EN 12002
	GREY	WHITE	
Initial tensile strength	~ 2.4 N/mm ²	~ 2.3 N/mm ²	°≥ 1 N/mm ² EN 1348
Tensile strength after the action of heat	~ 1.7 N/mm ²	~ 1.6 N/mm ²	°≥ 1 N/mm ² EN 1348
Tensile strength after immersion in water	~ 1.5 N/mm ²	~ 1.6 N/mm ²	°≥ 1 N/mm ² EN 1348
Bond after freezing/thawing cycles	~ 1.9 N/mm ²	~ 1.5 N/mm ²	°≥ 1 N/mm ² EN 1348

° according to standard "EN 12004"

* time intervals refer to a temperature of 23°C-50% R.H.. They become shorter with higher temperatures and longer at lower temperatures.

EMICODE

Emission class	r.p. No. Eurofins
EC1 Plus	392-2013-00019204_A_1

FRENCH VOC LABEL

Emission class	r.p. No. Eurofins
Classe A+	cert. Eurofins n° 00019204_B1 rev1 del 13/10/2013

SPECIFICATION

Ceramic floor and wall tiles must be laid with certified class "C2TE S1 cement-based powder adhesive according to standard 12004" such as TECHNOKOLLA's TECHNOSTAR, which can be applied in layers up to 15 mm thick on cement-based substrates.

Technokolla reminds you to examine the "notes" document that completes the information in this data sheet.

The document can be downloaded in the pdf format from the website www.technokolla.com.

The advice about technical matters in the technical data sheets, or given verbally or in writing by our personnel as part of our customer assistance service, is the result of our best and most up to date experience. Since we are unable to personally modify the conditions in the building site or the way the work is carried out, this information is purely indicative and, thus, binds us neither legally nor in any other way in relation third parties. This information does not relieve the end user from being responsible for testing our products so as to make sure they are fit for the required use. We therefore strongly advise the customer/user to subject Technokolla's products to preventive tests in order to ensure that they are suitable. The end user is also responsible for checking to make sure that this technical data sheet is not obsolete and that more recent editions have not replaced it. Thus, before using our products, you are advised to download the most up to date version of the technical data sheet from our web site www.technokolla.com.



A SIKA BRAND

Sika Italia S.p.A.

Registered Office and Administrative Headquarters:

Via L. Einaudi 6, 20068 Peschiera Borromeo (MI)

Sassuolo plant (MO): Via Radici in Piano 558, Postal Code 41049

Ph.: +39 0536 809711

Fax: +39 0536 809729

www.technokolla.com